



MERLO

P 60.10 US

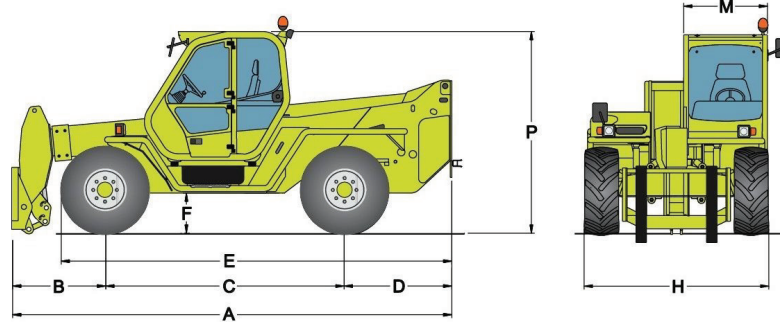
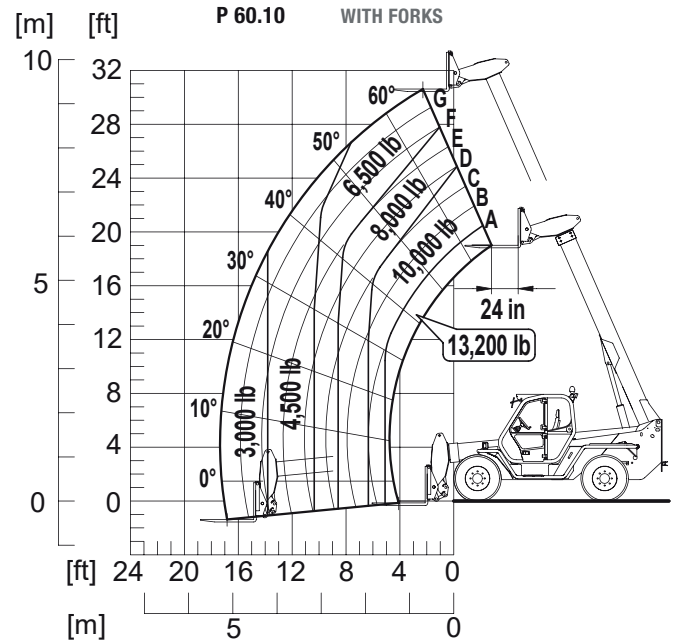
- **MAXIMUM LOAD CAPACITY: 13,200 LBS**
- **MAXIMUM LIFT HEIGHT: 31' 3"**
- **MAXIMUM REACH: 17' 4"**
- **LOAD CAPACITY AT MAXIMUM LIFT HEIGHT: 6,600 LBS**
- **LOAD CAPACITY AT MAXIMUM FORWARD REACH: 3,300 LBS**



SPECIFICATIONS: P 60.10 US



Power / 4 Cylinder Turbo Diesel	Deutz/101 HP
Transmission	2 Speed / Hydrostatic
Maximum Speed	25 MPH
Total Unladen Mass	22,000 LBS
Boom Sideshift	Standard
Frame Leveling	Standard / $\pm 10\%$
Load Sensing Hydraulic Pump (PSI-gal/min)	3,480-28.5
Fuel Capacity	40 Gallons
Hydraulic Oil Capacity	29 Gallons
Tires	18/19.5
Turning Radius	13'-0"
4 Wheel Drive / 3 Steering Modes	Standard



Dimensions					
A	17'-5"	D	4'-2"	H	7'-4"
B	4'-0"	E	15'-2"	M	3'-3"
C	9'-5"	F	1'-6"	P	8'-0"

DEALER INFORMATION: