

Digga's Tilt Attach is an attachment which fits between the machine pickup and attachment. There is no need to replace the machines quick attach frame. The slimline design is quick and hassle free to connect and operate.

The Tilt Attach allows the operator to tilt any attachment including 4 in 1 buckets, trenchers, slashers and brooms to assist work on hilly terrain or uneven surfaces and to enable ground shaping work with a 4 in 1 bucket.

## Features:

- Valve package is fully concealed and protected inside the Tilt Attach body preventing potential damage. Access is quick and easy from top of attachment.
- The slimline design only extend attachments away from the machine by 117mm.
- Solid steel clevis and centre pivot provides superior strength and durability.
- Fully enclosed 3" Bore cylinder with 1 1/2" rod provides superior tilting forces & durability.
- Replacable wearplates ensure longevity of components.
- Built in step on both sides of frame for safe access to machine.
- Centre mounted hoses eliminates trip hazards.
- Hose guide can be mounted on either side of frame to keep hoses away from tyres and tracks.
- Clearing holes on the bottom of frame prevents dirt from clogging the tilting mechanism.
- 2 models available to suit single or double remote machines. Single remote machines require model with electric over hydraulic valve.



## Ideal Use:

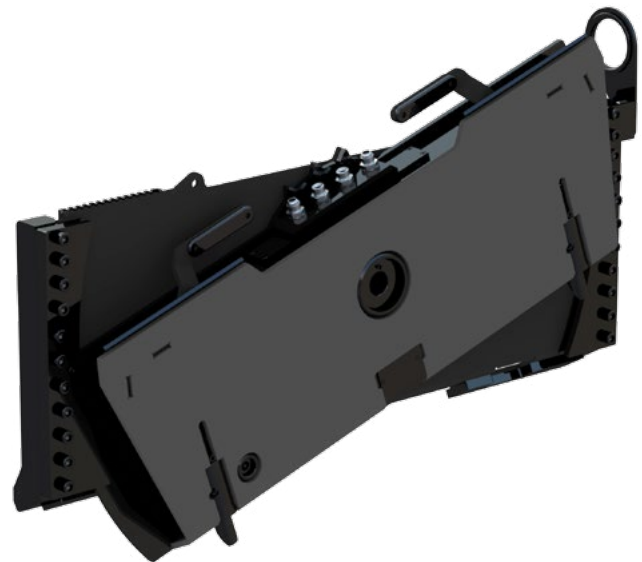
Allows for tilting of your attachments

## Machine Suitability:

Multifit and CAT skid steer loaders with tipping loads up to 4128kg

## Specifications:

Weight	175Kg
Cylinder Bore	3"
Cylinder Rod	1.5"
Tilt Angle Degree	±18°
Width (overall)	1235mm
Height (overall)	521mm
Depth (overall)	184mm
Depth (added to attachment)	117mm
Lifting Capacity	2064kg
Warranty	1 Year



**Contact your local professional dealer or contact Digga direct**

THE BEST DOWNUNDER

# DIGGA

PHONE: 1300 2 DIGGA EMAIL: [info@digga.com](mailto:info@digga.com) WEB: [www.digga.com](http://www.digga.com)

QLD, NT

4 Octal Street  
Yatala QLD 4207

NSW, ACT

Unit 2, 36 Bluett Drive  
Smeaton Grange NSW 2567

VIC, SA, TAS

27 Metcalf Street  
Dandenong VIC 3175

WA

6/15 Yampi Way  
Willetton WA 6155

