

CORFLUTE BOARD - MD (MEDIUM DUTY)

TECHNICAL DATA SHEET



PRODUCT DESCRIPTION

Corflute Board MD (Medium Duty) provides impact protection for any construction site. The boards are lightweight, while offering protection from heavy foot traffic, ladders, trolley's and dropping objects.

Suitable for use on internal projects.

PRODUCT PHYSICAL PROPERTIES

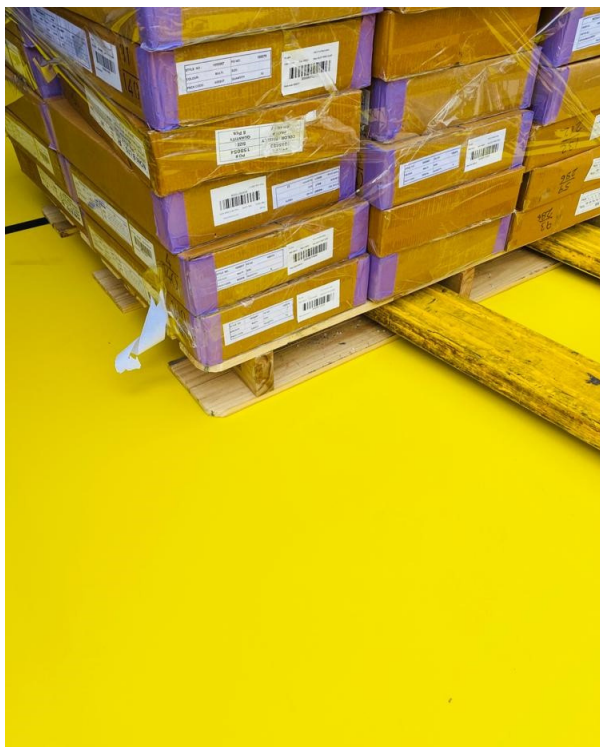
- Product Name:** Chief Board - MD / SKU: HCBMD85
- Product Type:** Protection Board
- Product Use:** Commercial Grade Temporary Protection System
- Appearance:** Light Grey Board with Light Grey Fabric Underlay
- Basic Ingredients:** Polypropylene
- Health Effects:** Please see Safety Data Sheet. Classified as non-hazardous material

PRODUCT PACKAGING

- Board Width:** 110cm
- Board Length:** 220cm
- Board Height:** 0.3cm
- Board Coverage:** 2.42sqm
- Gross Weight:** 2.3kg/Board
- Grams/sqm:** 850
- Packaging:** Heavy Duty Plastic Packaging
- Boards per Pack:** 10 Boards per Pack/20 Packs per Pallet

GENERAL INFORMATION

- Storage:** Store boards out of direct sunlight in a cool, dry, well ventilated place
- Storage Stability:** 18 month shelf life if boards kept in conditions above
- Disposal:** Product can be disposed of in local refuse bins or incinerated. Product is reuseable



Water Resistant



Prevents Stains



Impact Protection



Heavy Foot Traffic



Easy to install

Disclaimer: Customers are advised to consider the information in this data sheet in the context of how the product will be used, including surfaces and any other products used. The information provided in this guide represents our best scientific and practical knowledge. Any advice, information or assistance provided by Honcho Supplies in relation to its products is given in good faith, however is provided without liability or responsibility. Due to the wide variety of site conditions we are unable to assume liability for any loss that may arise from the use of our products. The user is responsible for checking the suitability of products for their intended use.