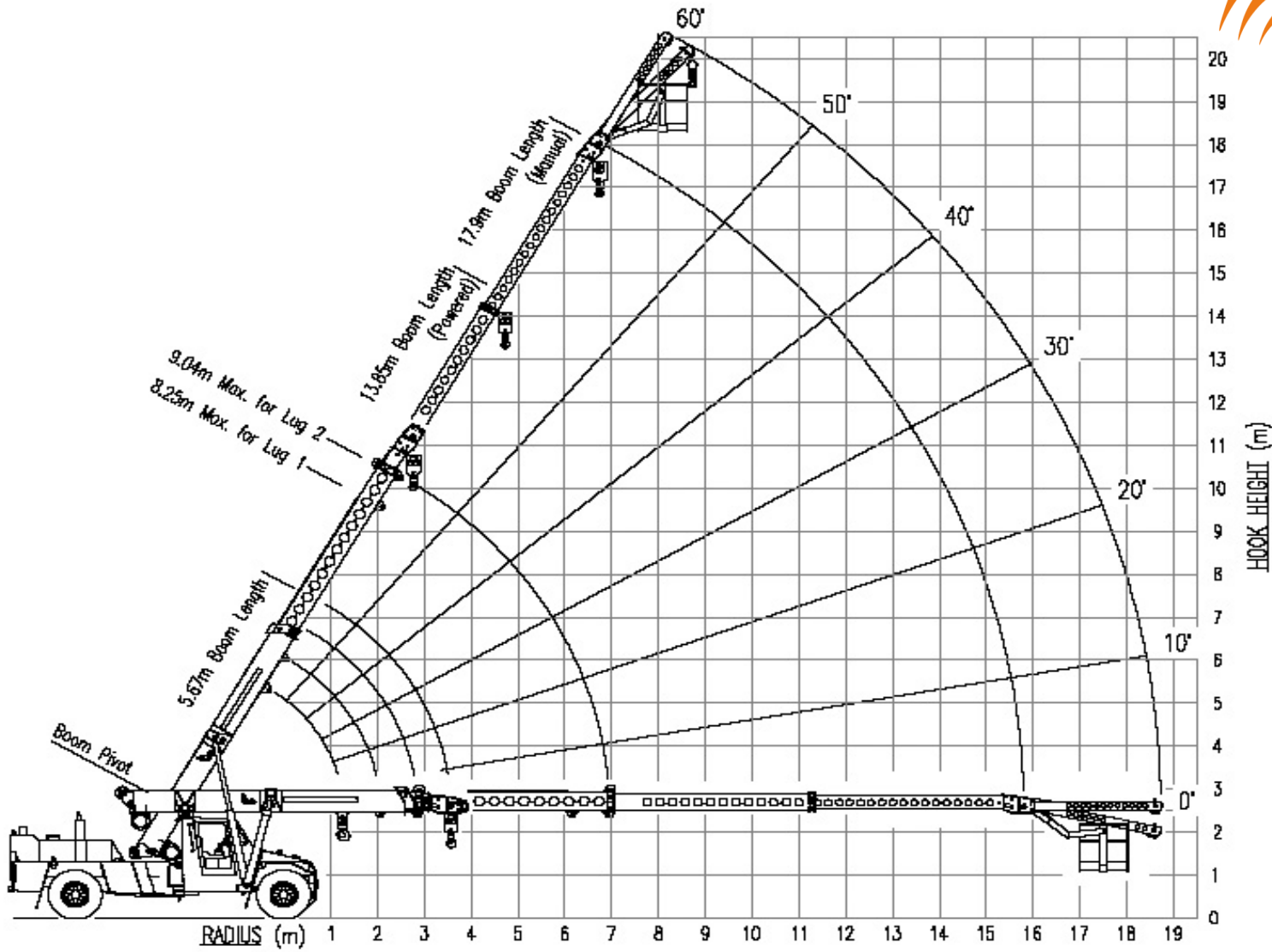


# 20T Franna.

## All Terrain Pick & Carry Crane



# 20T Franna.

## All Terrain Pick & Carry Crane



Radius in Meters	BOOM LENGTH (M)																		
	5.67	6.00	6.50	7.00	7.50	8.00	8.50	9.00	9.50	10.00	10.50	11.00	11.50	12.00	12.50	13.00	13.50	13.85	
1.6	16800	16250	15450	14900															
	12600	12600	12600	12600															
2.0	48	51	54	57															
	16800	16800	16500	15700	15100	14700	14350												
2.5	42	46	50	53	56	58	60												
	13900	13900	13900	13850	13850	13850	13850	13200	13000										
3.0	34	39	44	48	51	54	56	58	60										
	11450	11450	11450	11400	11400	11400	11400	11150	10250										
3.5	25	31	37	42	46	49	52	55	57	59	60								
	9650	9650	9650	9650	9650	9650	9650	9650	9650	9500	9500	8150	7500						
4.0	8	20	29	36	41	45	48	51	53	55	57	59	60						
	8400	8400	8400	8400	8400	8400	8400	8400	8350	8350	8350	8150	7500						
4.5	(3.57)	(3.90)	19	28	35	39	43	47	49	52	54	56	57	59	60				
			7500	7300	7300	7300	7300	7300	7300	7300	7300	7150	6550	6250	6050	5800	5650		
5.0			(4.40)	19	27	34	38	42	45	48	50	52	54	56	58	59	60		
				6650	6500	6500	6500	6500	6500	6500	6500	6500	6500	6150	5900	5650	5450	5300	5150
6.0				(4.90)	18	27	33	37	41	44	47	49	51	53	55	56	58	59	
					5950	5350	5250	5250	5250	5250	5250	5250	5250	5250	5050	4850	4700	4600	
7.0					(5.40)	(5.90)	17	25	31	35	39	42	45	47	49	51	53	54	
							4850	4450	4400	4400	4400	4400	4400	4350	4350	4350	4200	3950	
8.0							(6.40)	(6.90)	16	24	29	34	37	40	43	45	47	48	
									4100	3750	3700	3700	3700	3700	3700	3700	3700	3600	
9.0									(7.40)	(7.90)	15	23	28	32	36	38	41	43	
											3500	3200	3150	3150	3150	3150	3150	3150	
10.0											(8.40)	(8.90)	15	22	27	31	34	36	
													3000	2800	2800	2800	2800	2800	
11.00													(9.40)	(9.90)	14	21	26	29	
															2650	2500	2450	2450	
11.75															(10.40)	(10.90)	13	18	
																	2200	2100	2050
																	1950	1850	
																	(11.40)	(11.75)	

- S.W.L IN KILOGRAMS FOR SLEW ANGLES OF 10 DEG OR LESS EITHER SIDE OF STRAIGHT AHEAD.
- S.W.L IN KILOGRAMS FOR SLEW ANGLES OF GREATER THAN 10 DEG OR LESS EITHER SIDE OF STRAIGHT AHEAD.
- BOOM ANGLE - UNDEFLECTED (REF) VALUES IN BRACKETS ( ) ARE ACTUAL RADIUS AT ZERO DEG. BOOM ANGLE

MANUAL EXT'N	
MAX LENGTH 17.90M	
MAX RADIUS	S.W.L
6.74	2550
	60
9.31	2250
	50
11.53	2050
	40
13.34	1900
	1700
	30
14.67	1800
	1500
15.51	1650
	1350
15.80	1600
	1300
	0

FLY JIB 0 deg OFFSET	
MAX LENGTH 16.78M	
MAX RADIUS	S.W.L
6.23	1500
	1500
	60
8.62	1200
	1200
	50
10.69	970
	970
	40
12.38	850
	850
	30
13.63	770
	770
	20
14.40	750
	750
	10
14.68	750
	750
	0

FLY JIB 12.5 deg OFFSET	
MAX LENGTH 16.74M	
MAX RADIUS	S.W.L
6.70	1500
	1500
	60
9.03	1200
	1200
	50
11.03	970
	970
	40
12.63	850
	850
	30
13.78	770
	770
	20
14.46	750
	750
	10
14.64	750
	750
	0

MANUAL EXT'N	
FLY JIB 0 deg OFFSET	
MAX LENGTH 20.83M	
MAX RADIUS	S.W.L
8.25	1500
	1500
	60
11.22	1200
	1200
	50
13.79	970
	970
	40
15.88	850
	850
	30
17.43	770
	770
	20
18.39	750
	750
	10
18.73	750
	750
	0

MANUAL EXT'N	
FLY JIB 12.5 deg OFFSET	
MAX LENGTH 20.79M	
MAX RADIUS	S.W.L
8.25	1300
	1300
	60
11.22	1120
	1120
	50
13.79	920
	920
	40
15.88	820
	820
	30
17.43	770
	770
	20
18.39	750
	750
	10
18.73	750
	750
	0



## Energy Crane Services

A.B.N 47 919 009 949  
P.O. Box 78, Virginia QLD 4014  
3B/420 Bilsen Rd, Geebung QLD 4034

Mobile: 0411 774770  
Phone: (07) 3865 2705  
Email: info@energycranes.com.au  
www.energycranes.com.au